

New Programs for Kansans with Disabilities: Kansas Fire Safety Solutions and iKan Connect

South Central Kansas Assistive Technology Access Site
•Cindy Jones
•Gaye Calhoun
•Aaron Brown



Kansas Fire Safety Solutions



Smoke Alarm

Kansans who are deaf or hard of hearing qualify for a free smoke alarm, installed in their home that meets their unique needs.

Install Smoke Alarms

- You need at least one smoke alarm outside every sleeping area and on every level of your home



Know your Smoke Alarm and Alert Equipment

First Alert Smoke Alarm

- First Alert alarms will make a high pitched sound when it detects smoke



Know your Smoke Alarm and Alert Equipment

SafeAwake Alert device

- Device is installed where the person sleeps
- Makes a low loud sound, shakes the bed and a light flashes

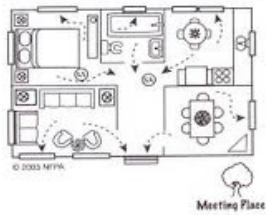


Know your Smoke Alarm and Alert Equipment



Gentex Smoke Alarm

- Has a 177cd strobe light
- It is installed high on the wall
- Gentex provides a visual alert for people while they are awake

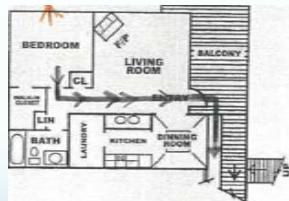


Home Escape Plan

AT Specialists will help you plan and practice a home fire drill specific to your home and family.

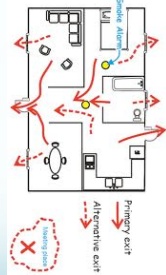
Home Escape Plan

A home escape map shows the way out of your home if you have a fire.



How Do I Make a House Escape Map?

- Draw a simple floor plan of your home on a large sheet of paper.
- Mark every door and window that can be used to get outside.
- Draw arrows in red to show the best way out of each room.
- Draw arrows in blue to show the second way out of each room. It should be the next best way to the outside.



GET OUT AND STAY OUT!

NEVER GO BACK INTO YOUR HOME FOR ANY REASON.

NOT FOR THE PEOPLE OR PETS.

NOT FOR ANYTHING!

GET OUT AND STAY OUT!

CALL 911 OR YOUR
Local Emergency Number!

Reduce Fire Risks

AT Specialists will assist you with a home safety survey designed to prevent fires, burns, falls and other common home injuries

- Smoking
- Stove/Ovens
- Microwaves
- Candles
- Electrical/Cords
- Space Heaters

Actual Installations



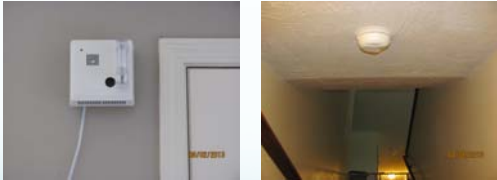
Actual Installations



Actual Installations



Actual Installations



How to Apply?

Assistive Technology for Kansans
and Kansas Fire Safety Solutions:

- Online: www.atk.ku.edu
- Email: atkapps@ku.edu
- Phone: 1-800-KAN DO IT or (1-800-526-3648)

iKan Connect

iKan Connect

- Kansas Deaf-Blind equipment distribution project
- Individuals who qualify can receive advanced communications and information services equipment

Who qualifies for iKan Connect?

- Individuals with combined vision and hearing loss that results in:
 - Difficulty in performing activities of daily living independently OR
 - Difficulty in achieving psychosocial adjustment OR
 - Difficulty obtaining employment
- Individuals who meet income guidelines

Combined vision and hearing limitations

Vision

- Visual acuity of 20/200 or less in better eye w/ corrective lenses OR
- Visual field of 20 degrees or less OR
- Progressive visual loss leading to either condition AND

Hearing

- Difficulty understanding most spoken speech with optimum amplification OR
- Progressive hearing loss leading to this condition

Income guidelines

- Annual income that does not exceed 400% of poverty level:
 - 1 person: income of \$45,960 or less
 - 2 persons: income of \$62,040
 - 3 persons: income of \$78,120
 - 4 persons: income of \$94,200
- Documentation required:
 - Pay stubs
 - SSI benefit letter

What does iKan Connect cover?

**Advanced
telecommunications
equipment**

Computers: Windows









Braille Displays

Brailliant BI 32

Focus 40



Braille and QWERTY Notetakers

Braille Sense U2

BrailleNote Apex



Deaf/Blind Communication Solutions

Brailliant Display/iPhone

BrailleNote/iPhone







